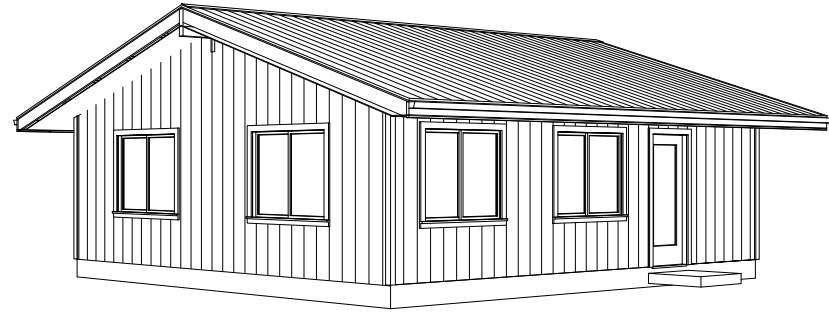


# ARGUS BUILDING SUPPLY

## STUDIO "B"

2x8 rafters, 24" o.c.  
 1/2" Ply. over all w/ Corrugated Metal Roof  
 4 in 12 pitch, 36" eaves, 24" gables  
 8 ft Plate, Window Tops @ 81"  
 5/8" T1-11 Siding over Tyvek



STUDIO "B"  
 AREA = 672 sq. ft. Efficiency Dwelling

